

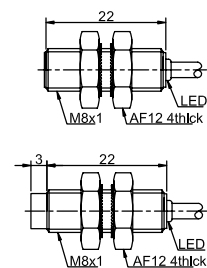
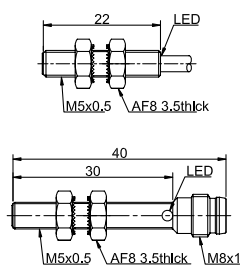
Item Code	LR05		LR08	
Mounting	● Flushed	● flushed	● Flushed	● Non-flushed
Sensing distance	0.8mm	0.8mm	1.5mm	2mm



Output	NAMUR	LR05AF08FLCN	LR05AF08FLCN-E1	LR08AF15FLCN	LR08AN02FLCN

Technical Parameter					
Supply voltage		8.2 VDC	8.2 VDC	8.2 VDC	8.2 VDC
Temperature drift		< ±10%	< ±10%	< ±10%	< ±10%
Output current	Attenuation	≤1mA	≤1mA	≤1mA	≤1mA
	Non-attenuation	≥2.2mA	≥2.2mA	≥2.2mA	≥2.2mA
Load impedance		≥1KΩ	≥1KΩ	≥1KΩ	≥1KΩ
Hysteresis		1...20%	1...20%	1...20%	1...20%
Repeat accuracy		<3%	<3%	<3%	<3%
Frequency		3000Hz	3000Hz	2500Hz	2000Hz
Output indicator	
Polarity protection	
Surge protection	
Short-circuit protection	
Ambient temperature		-25...+70°C	-25...+70°C	-25...+70°C	-25...+70°C
Ambient moisture		35...95%	35...95%	35...95%	35...95%
Protection degree		IP67	IP67	IP67	IP67
Housing material		Stainless steel	Stainless steel	Stainless steel	Stainless steel
Connection		2m PVC Cable	M8 Connector	2m PVC Connector	2m PVC Connector
Certification		CE U _I	CE U _I	CE U _I	CE U _I

* Cable material and length can be customized



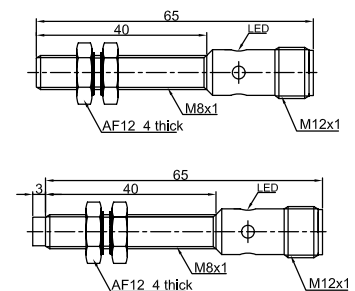
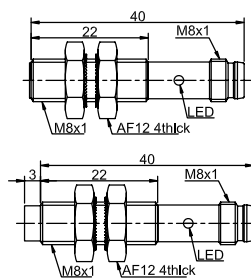
Item Code	LR08		LR08	
Mounting	● Flushed	◐ Non-flushed	● Flushed	◐ Non-flushed
Sensing distance	1.5mm	2mm	1.5mm	2mm



Output	NAMUR	LR08AF15FLCN-E1	LR08AN02FLCN-E1	LR08AF15FLCN-E2	LR08AN02FLCN-E2

Technical Parameter					
Supply voltage		8.2 VDC	8.2 VDC	8.2 VDC	8.2 VDC
Temperature drift		< ±10%	< ±10%	< ±10%	< ±10%
Output current	Attenuation	≤1mA	≤1mA	≤1mA	≤1mA
	Non-attenuation	≥2.2mA	≥2.2mA	≥2.2mA	≥2.2mA
Load impedance		≥1KΩ	≥1KΩ	≥1KΩ	≥1KΩ
Hysteresis		1...20%	1...20%	1...20%	1...20%
Repeat accuracy		<3%	<3%	<3%	<3%
Frequency		2000Hz	1500Hz	2000Hz	1500Hz
Output indicator	
Polarity protection	
Surge protection	
Short-circuit protection	
Ambient temperature		-25...+70°C	-25...+70°C	-25...+70°C	-25...+70°C
Ambient moisture		35...95%	35...95%	35...95%	35...95%
Protection degree		IP67	IP67	IP67	IP67
Housing material		Stainless steel	Stainless steel	Stainless steel	Stainless steel
Connection		M8 Connector	M8 Connector	M12 Connector	M12 Connector
Certification		CE U _L	CE U _L	CE U _L	CE U _L

* Cable material and length can be customized



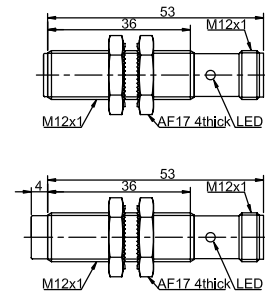
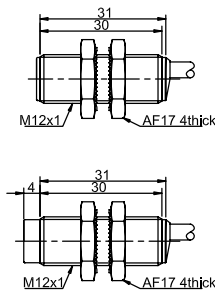
Item Code	LR12		LR12	
Mounting	● Flushed	◐ Non-flushed	● Flushed	◐ Non-flushed
Sensing distance	2mm	4mm	2mm	4mm



Output	NAMUR	LR12AF02FLCN	LR12AN04FLCN	LR12AF02FLCN-E2	LR12AN04FLCN-E2

Technical Parameter					
Supply voltage		8.2 VDC	8.2 VDC	8.2 VDC	8.2 VDC
Temperature drift		< ±10%	> ±10%	< ±10%	< ±10%
Output current	Attenuation	≤1mA	≤1mA	≤1mA	≤1mA
	Non-attenuation	≥2.2mA	≥2.2mA	≥2.2mA	≥2.2mA
Load impedance		≥1KΩ	≥1KΩ	≥1KΩ	≥1KΩ
Hysteresis		1...20%	1...20%	1...20%	1...20%
Repeat accuracy		<3%	<3%	<3%	<3%
Frequency		2000Hz	1500Hz	2000Hz	1500Hz
Output indicator	
Polarity protection	
Surge protection	
Short-circuit protection	
Ambient temperature		-25...+70°C	-25...+70°C	-25...+70°C	-25...+70°C
Ambient moisture		35...95%	35...95%	35...95%	35...95%
Protection degree		IP67	IP67	IP67	IP67
Housing material		Nickel-copper Alloy	Nickel-copper Alloy	Nickel-copper Alloy	Nickel-copper Alloy
Connection		2m PVC Cable	2m PVC Cable	M12 Connector	M12 Connector
Certification		CE U _L	CE U _L	CE U _L	CE U _L

* Cable material and length can be customized



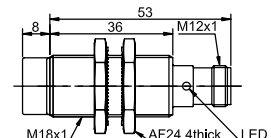
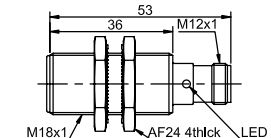
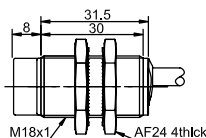
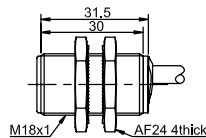
Item Code	LR18		LR18	
Mounting	● Flushed	◐ Non-flushed	● Flushed	◐ Non-flushed
Sensing distance	5mm	8mm	5mm	8mm



Output	NAMUR	LR18AF05FLCN	LR18AN08FLCN	LR18AF05FLCN-E2	LR18AN08FLCN-E2

Technical Parameter					
Supply voltage		8.2 VDC	8.2 VDC	8.2 VDC	8.2 VDC
Temperature drift		< ±10%	> ±10%	< ±10%	< ±10%
Output current	Attenuation	≤1mA	≤1mA	≤1mA	≤1mA
	Non-attenuation	≥2.2mA	≥2.2mA	≥2.2mA	≥2.2mA
Load impedance		≥1KΩ	≥1KΩ	≥1KΩ	≥1KΩ
Hysteresis		1...20%	1...20%	1...20%	1...20%
Repeat accuracy		<3%	<3%	<3%	<3%
Frequency		1500Hz	1000Hz	1500Hz	1000Hz
Output indicator	
Polarity protection	
Surge protection	
Short-circuit protection	
Ambient temperature		-25...+70°C	-25...+70°C	-25...+70°C	-25...+70°C
Ambient moisture		35...95%	35...95%	35...95%	35...95%
Protection degree		IP67	IP67	IP67	IP67
Housing material		Nickel-copper Alloy	Nickel-copper Alloy	Nickel-copper Alloy	Nickel-copper Alloy
Connection		2m PVC Cable	2m PVC Cable	M12 Connector	M12 Connector
Certification		CE U _L	CE U _L	CE U _L	CE U _L

* Cable material and length can be customized



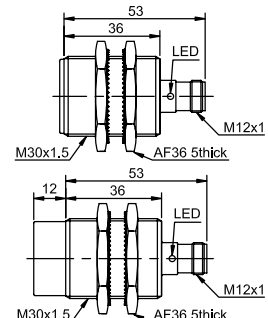
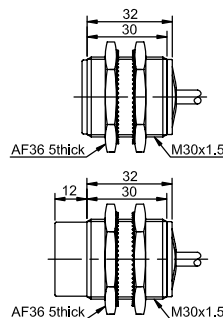
Item Code	LR30		LR30	
Mounting	● Flushed	◐ Non-flushed	● Flushed	◐ Non-flushed
Sensing distance	10mm	15mm	10mm	15mm



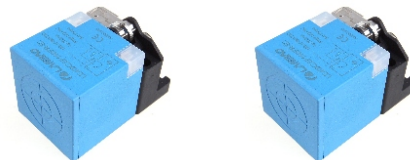
Output	NAMUR	LR30AF10FLCN	LR30AN15FLCN	LR30AF10FLCN-E2	LR30AN15FLCN-E2

Technical Parameter					
Supply voltage		8.2 VDC	8.2 VDC	8.2 VDC	8.2 VDC
Temperature drift		< ±10%	> ±10%	< ±10%	< ±10%
Output current	Attenuation	≤1mA	≤1mA	≤1mA	≤1mA
	Non-attenuation	≥2.2mA	≥2.2mA	≥2.2mA	≥2.2mA
Load impedance		≥1KΩ	≥1KΩ	≥1KΩ	≥1KΩ
Hysteresis		1...20%	1...20%	1...20%	1...20%
Repeat accuracy		<3%	<3%	<3%	<3%
Frequency		1000Hz	800Hz	1000Hz	800Hz
Output indicator	
Polarity protection	
Surge protection	
Short-circuit protection	
Ambient temperature		-25...+70°C	-25...+70°C	-25...+70°C	-25...+70°C
Ambient moisture		35...95%	35...95%	35...95%	35...95%
Protection degree		IP67	IP67	IP67	IP67
Housing material		Nickel-copper Alloy	Nickel-copper Alloy	Nickel-copper Alloy	Nickel-copper Alloy
Connection		2m PVC Cable	2m PVC Cable	M12 Connector	M12 Connector
Certification		CE U _L	CE U _L	CE U _L	CE U _L

* Cable material and length can be customized

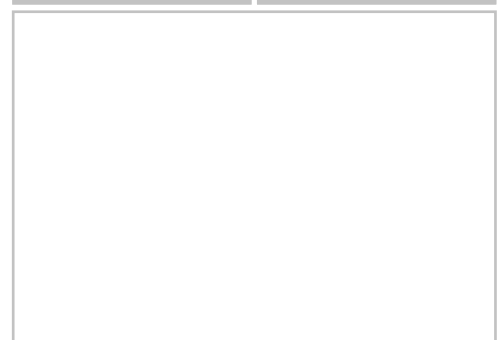
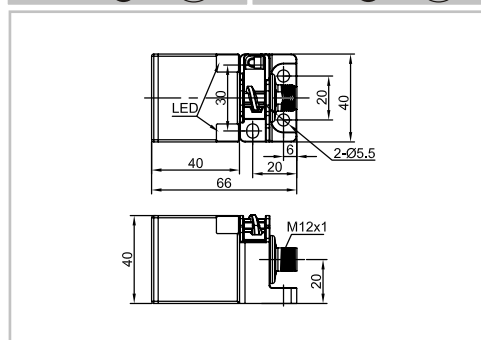
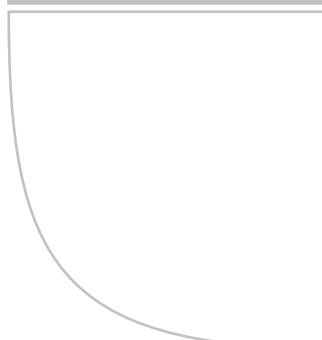



Item Code	LE40SZ	
Mounting	● Flushed	● Non-flushed
Sensing distance	15mm	20mm



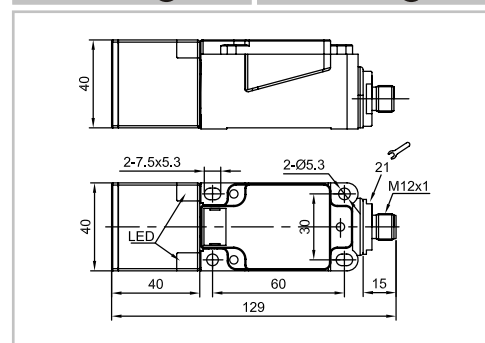
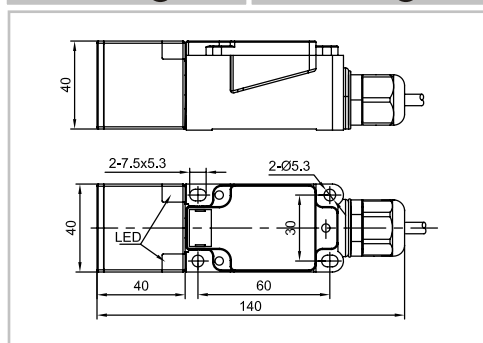
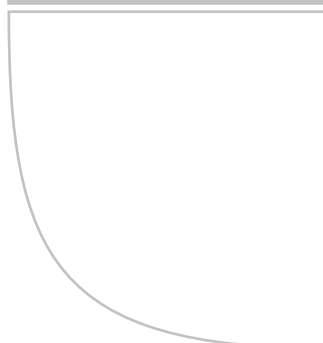
Output	NAMUR	LE40SZSF15FLCN-E2	LE40SZSN20FLCN-E2

Technical Parameter			
Supply voltage		8.2 VDC	8.2 VDC
Temperature drift		< ±10%	> ±10%
Output current	Attenuation	≤1mA	≤1mA
	Non-attenuation	≥2.2mA	≥2.2mA
Load impedance		≥1KΩ	≥1KΩ
Hysteresis		1...20%	1...20%
Repeat accuracy		<3%	<3%
Frequency		400Hz	250Hz
Output indicator	
Polarity protection	
Surge protection	
Short-circuit protection	
Ambient temperature		-25...+70°C	-25...+70°C
Ambient moisture		35...95%	35...95%
Protection degree		IP67	IP67
Housing material		PBT	PBT
Connection		M12 Connector	M12 Connector
Certification		CE U _L CCC	CE U _L CCC



Item Code		LE40XZ		LE40XZ	
Mounting		● Flushed	◐ Non-flushed	● Flushed	◐ Non-flushed
Sensing distance		15mm	20mm	15mm	20mm
					
Output	NAMUR	LE40XZSF15FLCN-D	LE40XZSN20FLCN-D	LE40XZSF15FLCN-E2	LE40XZSN20FLCN-E2

Technical Parameter					
Supply voltage		8.2 VDC	8.2 VDC	8.2 VDC	8.2 VDC
Temperature drift		< ±10%	< ±10%	< ±10%	< ±10%
Output current	Attenuation	≤1mA	≤1mA	≤1mA	≤1mA
	Non-attenuation	≥2.2mA	≥2.2mA	≥2.2mA	≥2.2mA
Load impedance		≥1KΩ	≥1KΩ	≥1KΩ	≥1KΩ
Hysteresis		1...20%	1...20%	1...20%	1...20%
Repeat accuracy		<3%	<3%	<3%	<3%
Frequency		400Hz	250Hz	400Hz	250Hz
Output indicator	
Polarity protection	
Surge protection	
Short-circuit protection	
Ambient temperature		-25...+70°C	-25...+70°C	-25...+70°C	-25...+70°C
Ambient moisture		35...95%	35...95%	35...95%	35...95%
Protection degree		IP67	IP67	IP67	IP67
Housing material		PBT	PBT	PBT	PBT
Connection		Terminal connect	Terminal connect	M12 Connector	M12 Connector
Certification		CE U _L	CE U _L	CE U _L	CE U _L



Item Code	LE80XZ		LE80XZ	
Mounting	● Flushed	◐ Non-flushed	● Flushed	◐ Non-flushed
Sensing distance	40mm	50mm	40mm	50mm



Output	NAMUR	LE80XZSF40FLCN-D	LE80XZSN50FLCN-D	LE80XZSF40FLCN-E2	LE80XZSN50FLCN-E2

Technical Parameter

Supply voltage	8.2 VDC	8.2 VDC	8.2 VDC	8.2 VDC
Temperature drift	< ±10%	< ±10%	< ±10%	< ±10%
Output current	Attenuation	≤1mA	≤1mA	≤1mA
	Non-attenuation	≥2.2mA	≥2.2mA	≥2.2mA
Load impedance	≥1KΩ	≥1KΩ	≥1KΩ	≥1KΩ
Hysteresis	1...20%	1...20%	1...20%	1...20%
Repeat accuracy	<3%	<3%	<3%	<3%
Frequency	100Hz	100Hz	100Hz	100Hz
Output indicator
Polarity protection
Surge protection
Short-circuit protection
Ambient temperature	-25...+70°C	-25...+70°C	-25...+70°C	-25...+70°C
Ambient moisture	35...95%	35...95%	35...95%	35...95%
Protection degree	IP67	IP67	IP67	IP67
Housing material	PBT	PBT	PBT	PBT
Connection	Terminal connect	Terminal connect	M12 Connector	M12 Connector
Certification	CE U _L	CE U _L	CE U _L	CE U _L

